

Discussion Guide



IT'S YOUR STORY.



PBS AMERICAN PORTRAIT

A NATIONAL STORYTELLING PROJECT

Join in at pbs.org/americanportrait



KMOS  PBS

#AmericanPortraitPBS

Funding for PBS American Portrait
is provided by



The Bullseye Design is a registered trademark of Target Brands, Inc.



A MARGARET & CARROLL PHILANTHROPY

Using This Guide



PBS AMERICAN PORTRAIT is a new docuseries that gathers and shares stories as part of a national storytelling project. These stories are woven into the American Portrait docuseries & TV specials, airing on KMOS.

PBS AMERICAN PORTRAIT initiative seeks to define what it means to be an American today. To answer this question, PBS and its partners are gathering photo, video and text submissions from an array of Americans. The initiative also includes stories from PBS Digital Studios that will stream as a companion miniseries, a documentary series inspired by user submissions, live event experiences, and educational materials for classrooms across the country.

PBS AMERICAN PORTRAIT aims to capture the state and spirit of our nation in a way that only PBS is positioned to do. With our unique access to all Americans, we're inviting audiences to be heard and to share their stories, through their own words and images.

This discussion guide is designed to help educate and provide direction in interaction, tools for engagement, and resources for action.

What inspired this initiative?

PBS AMERICAN PORTRAIT was inspired in part by Edward Steichen's historic 1955 exhibition "The Family of Man." While Steichen's historic exhibit featured photographs taken around the world by professional photographers, **PBS AMERICAN PORTRAIT** will consist of videos, photos and text created by the public.

What is the KMOS local initiative about?

The **KMOS** collaboration with **West-Central Independent Living Solutions (WILS)** and **Services for Independent Living (SIL)** is designed to show that people in central Missouri with disabilities are the same as everybody else in America. They are people first, and have exactly the same thoughts and feelings and make contributions to our society that help make up the rich tapestry of American life today!

How to watch American Portrait

- PBS broadcast premiere on KMOS 6.1 - Tuesday, January 5, 2021
- Online streaming at kmos.org

EVERYONE HAS A STORY. TELL YOURS.



About the initiative partners



Services for Independent Living

Services for Independent Living (SIL) is a non-profit Center for Independent Living that promotes independence for persons with disabilities, seniors, and veterans by following the Independent Living Philosophy.

SIL is **Consumer-Controlled** with at least fifty-one percent of staff and Board of Directors being individuals with disabilities; **Community-Based** programs, supports, and services designed to increase independence, quality of life, and economic self-sufficiency of people with disabilities, seniors, and veterans; **Cross-Disability** by serving people with all types of disabilities; **Across the Life Span** by serving individuals of all ages; and **Non-Residential** by not owning or operating any residential care facilities.

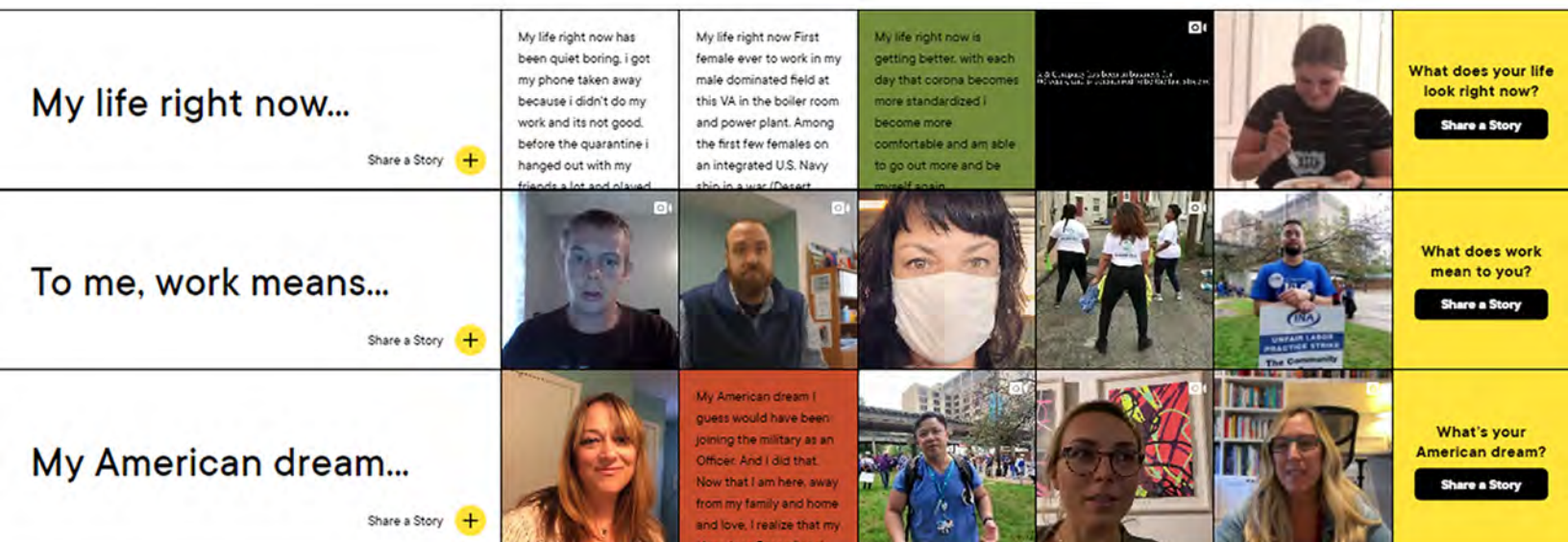


As a Center for Independent Living (CIL) we empower persons with disabilities to take charge of their lives and guide their own destinies to live as independently as possible. WILS staff and consumers work together to remove barriers and prejudices in society so that all individuals can live, can work and can enjoy all that their communities have to offer. Fifty-one percent of our staff and board of directors are persons with disabilities; we are who we serve.

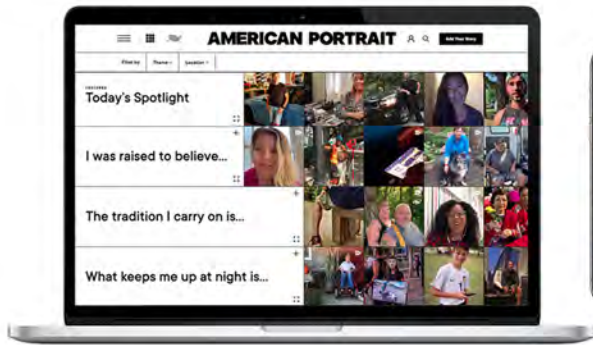
How does PBS American Portrait work?

PBS AMERICAN PORTRAIT is a national storytelling initiative that will live across multiple platforms. People across the nation are invited to submit their unique stories by responding to a series of thought-provoking prompts. For each prompt, a user can respond by submitting a video, a photograph, a drawing/illustration or text. Here are the prompts currently being used by the initiative:

- **I was raised to believe...**
- **When I step outside my door...**
- **I took a risk when...**
- **The tradition I carry on is...**
- **My Saturday night looks like...**
- **My American story started when...**



Special Online Convening Event



KMOS-TV will hold a convening/panel discussion that will be paneled by professional staff from **WILS** and **SILS** to be held in November of 2020.

Discussion During the Convening:

This docuseries and the special online convening is a great way to start a community dialogue. The questions that follow can help you think more about the main ideas and help generate a discussion with viewers.

- How do you define community organization? What are some examples of organizations assisting individuals in need or empowering members of your community?
- What are some of the obstacles for people with disabilities in central Missouri overcome?
- What is the greatest need in your opinion to provide services for individuals with disabilities?
- When you as a professional who works with individuals with disabilities, what is your greatest challenge?
- What types of activities do WILS & SIL provide to members of our communities that are disabled?
- What are some common misconceptions about individuals with disabilities?
- What keeps you committed to the mission?
- What are some ways for community members to become involved and engaged with community organizations such as WILS and SIL?
- What are some of the most encouraging stories that you can share?
- Are there enough resources in our communities to serve these individuals?
- Where can people go for more information, to help or volunteer?
- How can members of our community share their own story with AMERICAN PORTRAIT?

Additional Resources

Visual and Hearing Impairment Resources

Braille Institute: www.brailleinstitute.org

Helen Keller National Center for Deaf Blind: www.hknc.org

Missouri Commission for the Deaf and Hard of Hearing: www.mcdhh.mo.gov

Missouri Council of the Blind: www.moblind.org

Missouri Rehabilitation Services for the Blind: www.dss.mo.gov

Missouri School for the Blind: www.msb.dese.mo.gov

Missouri School for the Deaf: www.msd.dese.mo.gov

Missouri Department of Mental Health - Deaf Services: www.dmh.mo.gov

Brain Injury Resources

American Brain Foundation: www.americanbrainfoundation.org

Brain Injury Association of America: www.biausa.org

Brainline.org: www.brainline.org

Brain Injury Association of Missouri: www.biamo.org

Christopher & Dana Reeve Foundation: www.christopherreeve.org

Other Resources

Missouri Vocational Rehabilitation: www.dese.mo.gov

Missouri Protection and Advocacy: www.moadvocacy.org

Missouri Department of Health and Senior Services; www.health.mo.gov

Missouri Inclusive Housing Development Corporation: www.mohousing.com

State of Missouri Disability Portal: www.disability.mo.gov

Alzheimer's Association: www.alz.org, 800-272-3900

Cerebral Palsy Group: www.cerebralpalsygroup.com

Missouri People First: www.missouripeoplefirst.org, 800-444-0821

Disability Discrimination - EEOC: www.eeoc.gov

Telephone Relay Service: www.fcc.gov